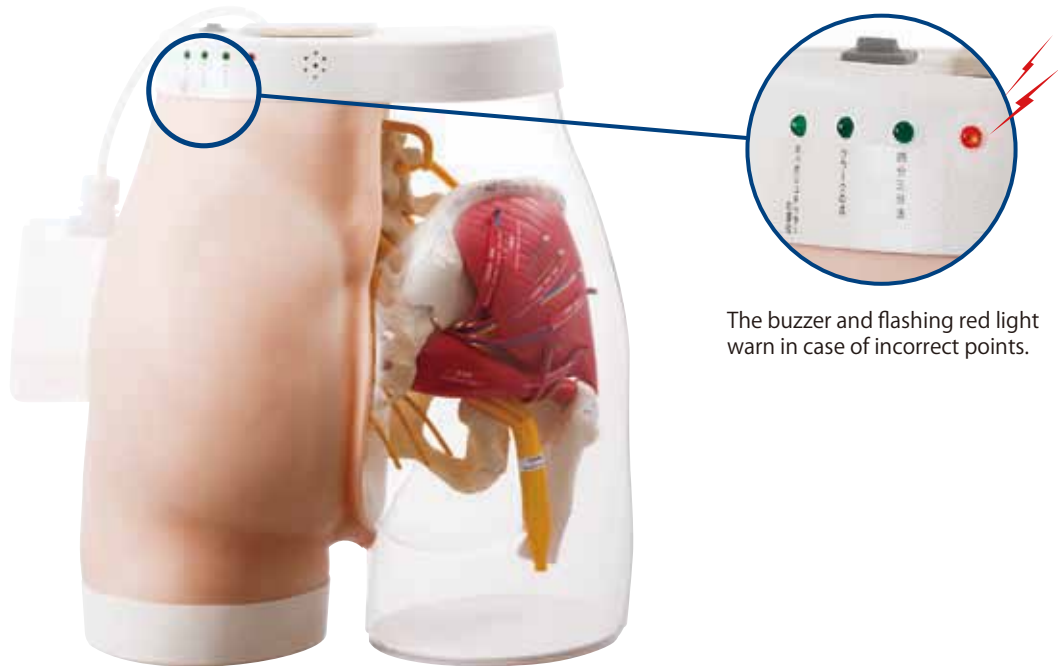


Intramuscular Injection Model of Buttocks Type 2

- Weight/About 7kg ● Case size/W41×D47×H36cm
- Accessories/Drain bag, Stands for Placing the model in a lateral position, Storage case
- Supervision • Director/Satoh Yoshie, Sugiyama Jogakuen University



The buzzer and flashing red light warn in case of incorrect points.

Practice of 3 injection sites

Shibusanbu* method and Clarke's and Hochstetter's points are established in the model.

* Upper Outer quadrant of Buttocks

Practice



Injection training to correct injection sites is possible.



Water (only tap water) can be infused.